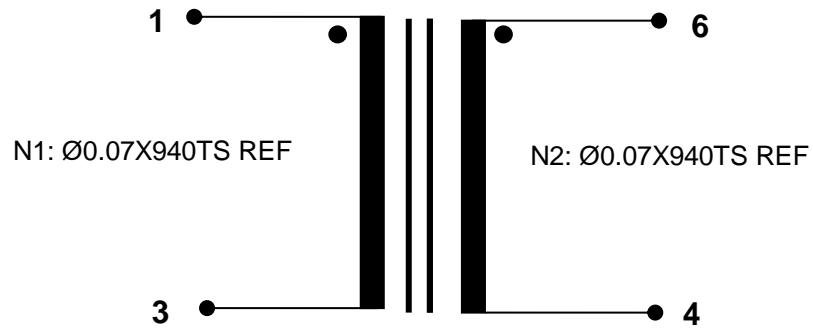


# LAYOUT DIAGRAM 原理图:(FIG-1)

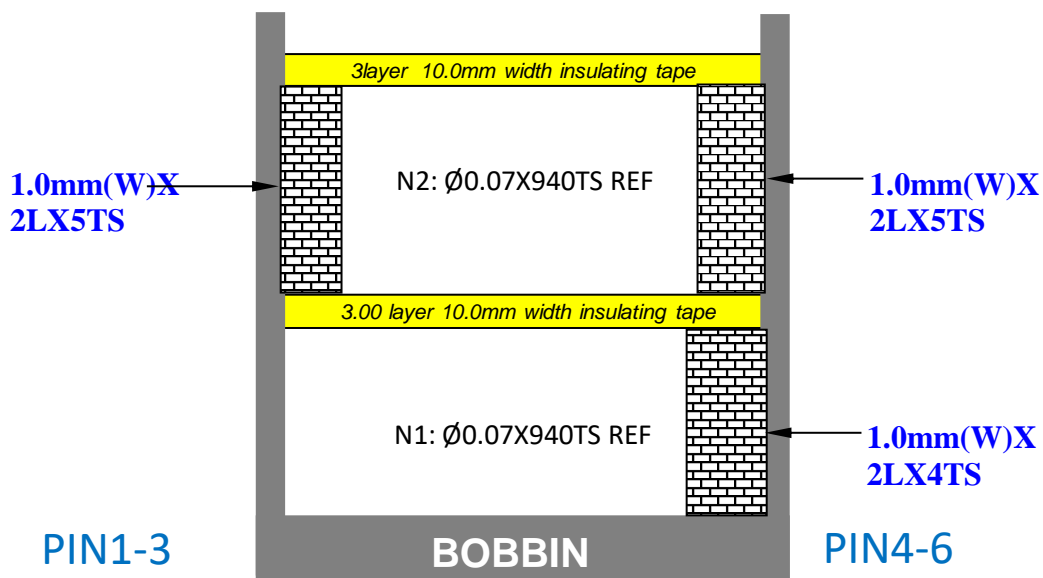


**FIG-1**

**NOTE:**

1.每绕完一层需暂停,绕下一层时再启动,防止漏感不良.

# CROSS SECTION DIAGRAM 剖视图 : (FIG-2)



**FIG-2**

Prepared By ENG:	Date:	<b>TITLE:</b>  <b>TRANSFORMER</b>	<b>CUSTOMER</b> Approved:	MODEL NO.:EE16	
Checked By QA:	Date:			REV.	03
Approved By ENG:	Date:			PAGE 1 OF 3	



## DATA SPECIFICATION(特性要求): (TABLE-2)

ITEM 项目	MEASUREMENTS 测试脚位	CHARACTERISTICS 测试范围	MEASURING CONDITIONS 测试条件 T=-40~125℃;HR(%)=45±15	REMARK 备注
LS 电感	PIN(1-3) PIN(6-4)	8.0~25.0H	F(kHz)=0.2 Ug(V)=1.0	SERIAL MODE 串联模式
LK 漏感	PIN(1-3)	3.6~5.4mH	F(kHz)=0.2 Ug(V)=1.0 (SHORT SEC.)	SERIAL MODE 串联模式
DCR 直流电阻	PIN(1-3)	110~154Ω		4 WIRES MODE 四线模式
	PIN(6-4)	130~160Ω		4 WIRES MODE 四线模式
HIPOT 耐压	PRI./SEC.	NO BREAKDOWN 漏电流 ≤ 5.0mA	VDC=3750V /1SEC. F(Hz) = 50	/
PHASE SHIFT 周相移动	PRI./SEC.	±1.5° MAX.	VAC=0.5V F(Hz) = 60	/
PH 相位	REFER TO LAYOUT DIAGRAM (FIG-1) 参考原理图(FIG-1)			

**REMARK:MEASURING CONDITIONS :T=-40~125℃;HR(%)=45±15**

Prepared By ENG:	Date:	<b>TITLE:</b>  <b>TRANSFORMER</b>	<b>CUSTOMER</b>	MODEL NO.:EE16	
Checked By QA:	Date:		Approved:	REV.	03
Approved By ENG:	Date:		Date:	PAGE 2 OF 3	

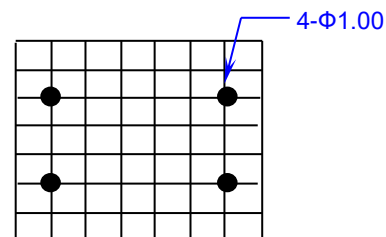
# OUTLINE DIAGRAM (外观图): ( FIG-3 FIG-4 FIG-5 FIG-6)

UNIT: mm

Tolerance unless otherwise specified: .X ± 0.5 .XX± 0.2



FIG-3



Grid step is 2.54mm  
Recommendation PCB Layout

FIG-6

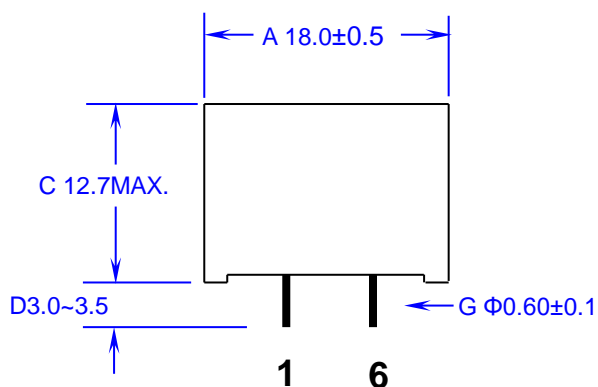


FIG-4

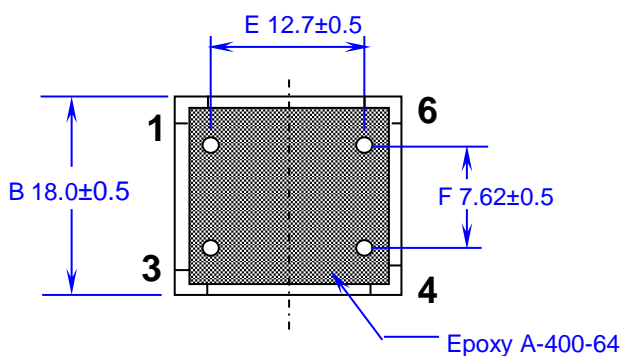


FIG-5

## NOTE:

1.All parts should be complied with RoHS requirement.  
产品须满足RoHS需求.

2.YYWW: Year and week code(FIG-5) ;  
YYWW: 年份和周期代码(FIG-5);

Prepared By ENG:	Date:	<b>TITLE:</b>  <b>TRANSFORMER</b>	CUSTOMER	MODEL NO:EE16		
Checked By QA:	Date:			Approved:	REV.	03
Approved By ENG:	Date:			Date:	PAGE	3 OF 3