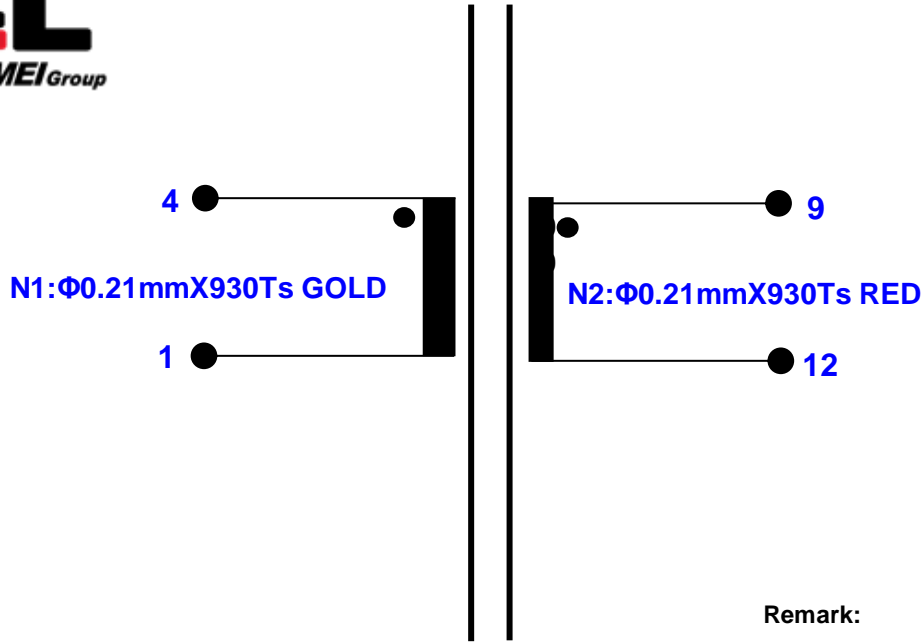




LAYOUT DIAGRAM(原理图): (FIG-1)



Remark:

1:.N1&N2 BIFILAR WINDING

PRI. FIG-1 SEC.

CROSS SECTION DAGRAM剖视图: (FIG-2)

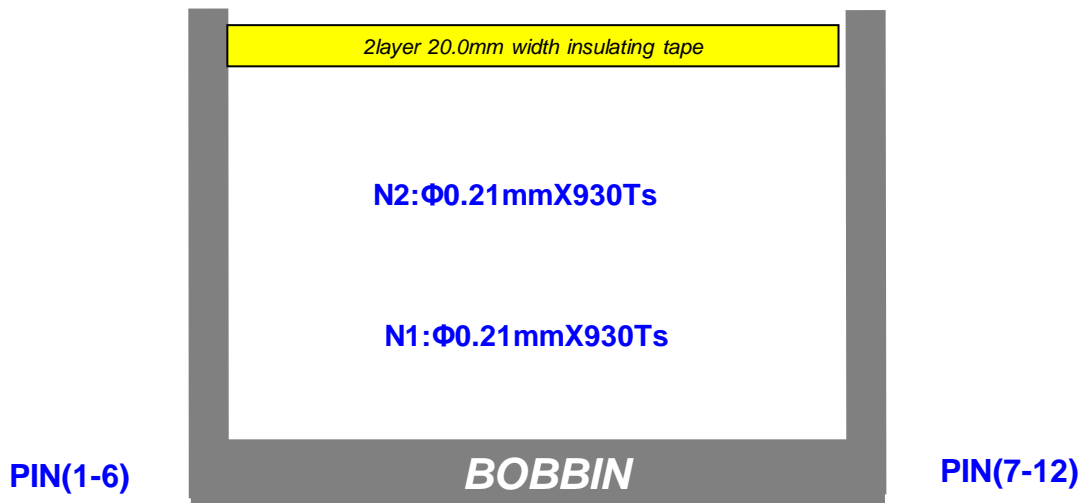


FIG-2

Prepared By:	DATE :	TITLE:	CUSTOMER	MODEL NO.:EI41	
Checked By :	DATE :		Approved:	REV.:	00
Approved By :	DATE :	TRANSFORMER	Date:	PAGE 1 OF 3	

DATA SPECIFICATION 特性要求: (Table-1)

ITEM 项目	MEASUREMENT S 测试脚位	CHARACTERISTICS 测试范围	MEASURING CONDITIONS 测试条件 (T=20±4℃;HR(%)=45±15)	REMARK 备注
LS 電感	PIN(4-1)	1.5H MIN	F(Hz)=120 Ug(V)=0.05	SERIAL MODE 串联模式
	PIN(9-12)	1.5H MIN	F(Hz)=120 Ug(V)=0.05	SERIAL MODE 串联模式
LK 漏感	PIN(4-1)	70uH MAX	F(kHz)=10 Ug(V)=0.1 Short PIN9,12	SERIAL MODE 串联模式
DCR 直流电阻	PIN(4-1)	35Ω ±15%	25℃	4 WIRES MODE 四线模式
	:PIN(9-12)	35Ω ±15%	25℃	4 WIRES MODE 四线模式
TURN RATIO 圈数比	PIN(4-1):PIN(9-12)	930Ts:930Ts±0.5Ts	F(kHz)=20 Ug(V)=1.0	以平面磁芯 测试为准
HIPOT 耐压	PRI./SEC.	NO BREAKDOWN 漏电流≤5mA	VAC=200V/60SEC. F(Hz)=50	/
	PRI./CORE.	NO BREAKDOWN 漏电流≤5mA	VAC=200V/60SEC. F(Hz)=50	/
	SEC./CORE.	NO BREAKDOWN 漏电流≤5mA	VAC=200V/60SEC. F(Hz)=50	/
IR 绝缘电阻	PRI./SEC.	100M ΩMIN	VDC=500	/
	PRI./CORE.	100M ΩMIN	VDC=500	/
	SEC./CORE.	100M ΩMIN	VDC=500	/
PH 相位	REFER TO LAYOUT DIAGRAM FIG-1 参照原理图 FIG-1			

REMARK:初级和次级不相同的两个绕组需测试是否短路

100% testing for the above electrical characteristics.

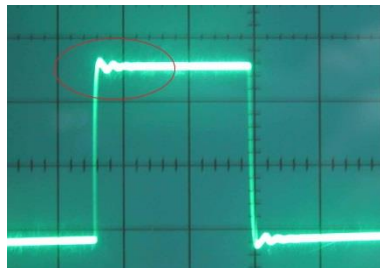
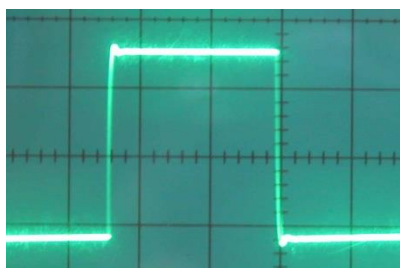
所有产品按以上要求进行100%测试.

Quality Requirement:(品质要求)

Ref ANSI/ASQC.Z1.4 2008 Level II . Major AQL=0.4% Minor AQL=1.0%.

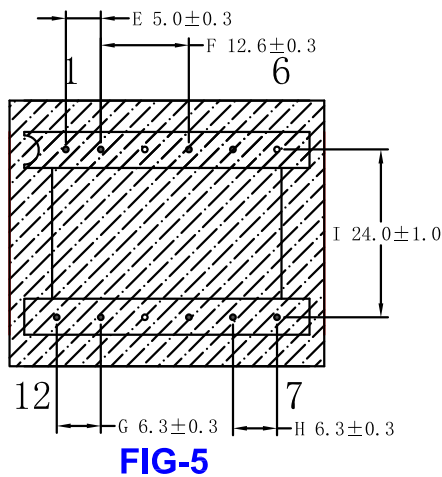
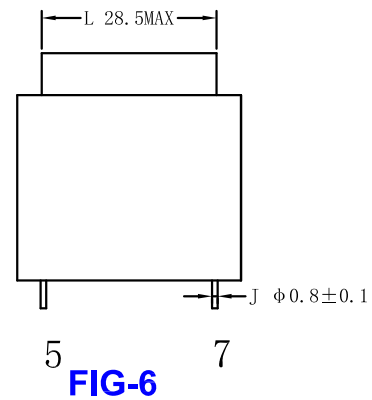
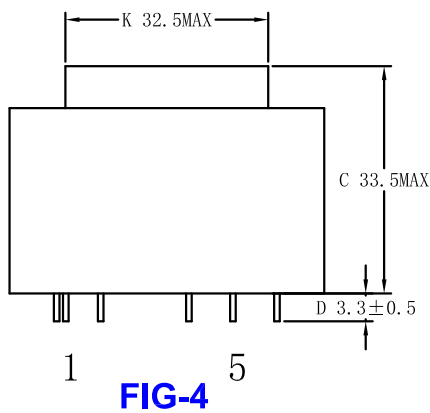
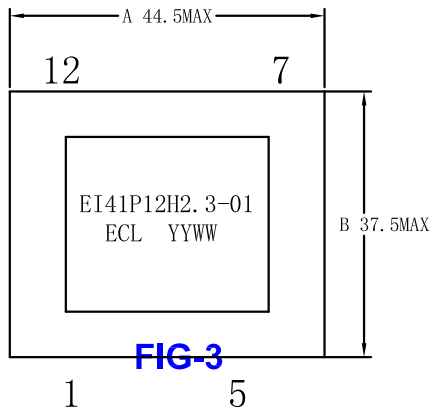
参照ANSI/ASQC.Z1.4 2008 Level II . Major AQL=0.4% Minor AQL=1.0%.

波形测试: PIN(4-1)输入10KHZ 1V 的方波信号,测量PIN(9-12)的波形
波形上升/下降出现一个或没有跳点为良品.(如图一)



Prepared By:	DATE :	TITLE:	CUSTOMER	MODEL NO.:EI41	
Checked By :	DATE :		Approved:	REV.:	00
Approved By :	DATE :	TRANSFORMER	Date:	PAGE 2 OF 3	

UNIT: mm (FIG-3 FIG-4 FIG-5 FIG-6)



NOTES:

1. REMOVE PIN3, 6, 10;
拔除PIN3, 6, 10
2. The cores with 2 layers tape of 14.0mm;
磁芯用14.0mm胶带包2圈固定;
3. The transformer must be vacuum impregnated in varnish;
产品需含浸凡立水且抽真空;
4. YYWW: year and week code(FIG-3);
YYWW:年份周期代码(FIG-3);
5. The part must be complied with RoHS;
产品需满足RoHS要求;
6. The transformer will be assembled in the rubber shell, with 2001A glue
将变压器组装在胶壳内, 用2001A胶灌封

Prepared By :	Date:	TITLE:	CUSTOMER	MODEL NO.:EI41	
Checked By :	Date:	TRANSFORMER	Approved:	Rev.:	01
Approved By :	Date:		Date:	PAGE 3 OF 3	

免责声明 Disclaimer

Specifications and appearances may change without notice. All statements, technical information and recommendations herein are based on tests that we believed to be reliable, but the accuracy and completeness are not guaranteed. Before using, user should determine the suitability of the product for its intended use, and the user assumes all risks and liabilities whatsoever in connection therewith. Neither the seller nor the manufacturer shall be liable for any loss or damage, direct, incidental or consequential, including loss of profits or revenues arising from the use or inability to use the product. Any statements or recommendations shall have no effect unless contained in an agreement signed by authorized personnel of the seller and manufacturer.

依美电感保留更改产品资料和外观的最终权利而无需事先通知。如有任何争议, 依美电感保留最终决定权。此中文免责声明为英文版本译本, 如中、英文两个版本有任何抵触或不相符之处, 应以英文版本为准。